

Might  
Point  
Yachtfest  
2016

# LOG BOOK FOR HIGH POINT YACHTFEST 2016



SARDINIA

SEPTEMBER 17TH TO 23RD

Dear High Point sailors,

Welcome to Sardinia, La Maddalena and Corsica. This is the most beautiful area to sail in the Mediterranean, but there is always a risk of high winds preventing us from leaving harbour. The highlight of the week is Bonifacio which is so spectacular as to be almost unbelievable. We go there first to keep the option to go there later in the week if the wind is too strong for the planned time. The weather may mean we have to reverse the route or even to do a completely different one, so please consider the itinerary as indicative only.

For the few of you who have not been before, High Point YachtFest gives skippers and crews the chance to enjoy relaxed racing in a Mediterranean setting and to indulge in the local culture with fine dining and, above all, to socialise in beautiful, sometimes remote, natural venues with friends. Sometimes we will arrive early enough to do some sightseeing if crews wish and whenever possible there will be time for swimming, pre-dinner sundowners, music and mingling before sitting down for dinner, either on board or in a local restaurant. On Thursday evening, we will raft up for a night of gourmet dining with each crew preparing a special meal for all to enjoy and there is a prize for the meal voted as the best. Expect live acoustic music by the more talented crews and plenty of on-deck dancing. The evening is dedicated in loving memory of Paul "Keyp Rockin'" Roux and is known as the Roux Gourmet evening.

Since 2007 Sasha and I have been working together organising the annual HPYF events, and we each contribute what we are best at. Sasha sources the yachts and deals with the charter companies, organises the Welcome and Prize Giving events and takes care of land transfers, advice/information on day to day plans and just about everything else. I am responsible for creating this Logbook (actually not a Log Book, but it's what we call it), for planning daily courses and acting as Race Officer for the week. I calculate (informed guess) your handicap, but please feel free to discuss your Time Correction Factor (TCF) before the first race if you feel it is not correct.

Our right hand man is Dave who has been with us from the start, patiently helping with on-the-ground arrangements.

Our special thanks to the charter companies (Boomerang, Cruising Charter, North Sardinia Sail, Sun Charter), especially thanks to Boomerang for helping with the organization of the Prize Giving party at Su Cubone (because we have not learned Italian well enough YET!) and a big thanks to Matt's too for hosting our Welcome party again.

We hope you will enjoy this area which is fantastic if the winds stay manageable.

With best wishes and good luck to you all from,  
Sasha, John and Dave

### CONTENTS:-

P1-2	COVER
P3	INTRODUCTION
P4	ON ARRIVAL...
P5	PARTIES
P6	GENERAL INFO
P7	SAILING INSTRUCTIONS
P8	RABBIT START
P9-14	DAILY ROUTES
P15	THE FLEET
P16+	CREWS
	BACK ITINERARY





### General

All the information about the Check-in, arrival & departure logistics, Welcome and Prize Giving parties details will be sent out by email by 1st September. See the Google Earth picture on the next page to see where the charter companies are located.

### Arrival

Everyone will do the check-in where their boat is based (Portisco Marina or Cala dei Sardi). The plan is, after the check-in, for all the boats in Cala dei Sardi to move to Portisco Marina. We can coordinate airport transfers for people via transfer companies and the prices will depend on how many people there are in each transfer. Please start sending the info to Sasha once you have it if you want us to look after it. Otherwise, it is very easy to grab a local taxi on arrival and the prices are very similar too.

### Facilities

There is a supermarket, chandlers store, lifting facilities, workshops, restaurants, laundry, cafés and everything else you would expect in and around a good quality marina. There are some very fashionable shops too, so, guys, keep your wallets safe! There are no such facilities in Cala dei Sardi, but Portisco Marina is just around the corner.

### Check-in

All skippers should check in and take over their boat from mid afternoon on Saturday (papers generally say 17:00, but boats could be ready earlier so it is worth checking with your charter company). More details can be found at <http://www.marinadiportisco.it> and <http://www.caladeisardi.it/>.

## Welcome Party

The welcome party will be held in Matts Bar in Portisco.

Start time is 19:30, but feel free to arrive early.  
Details to follow by email by 1st September.

<http://ilovemattsportisco.com>

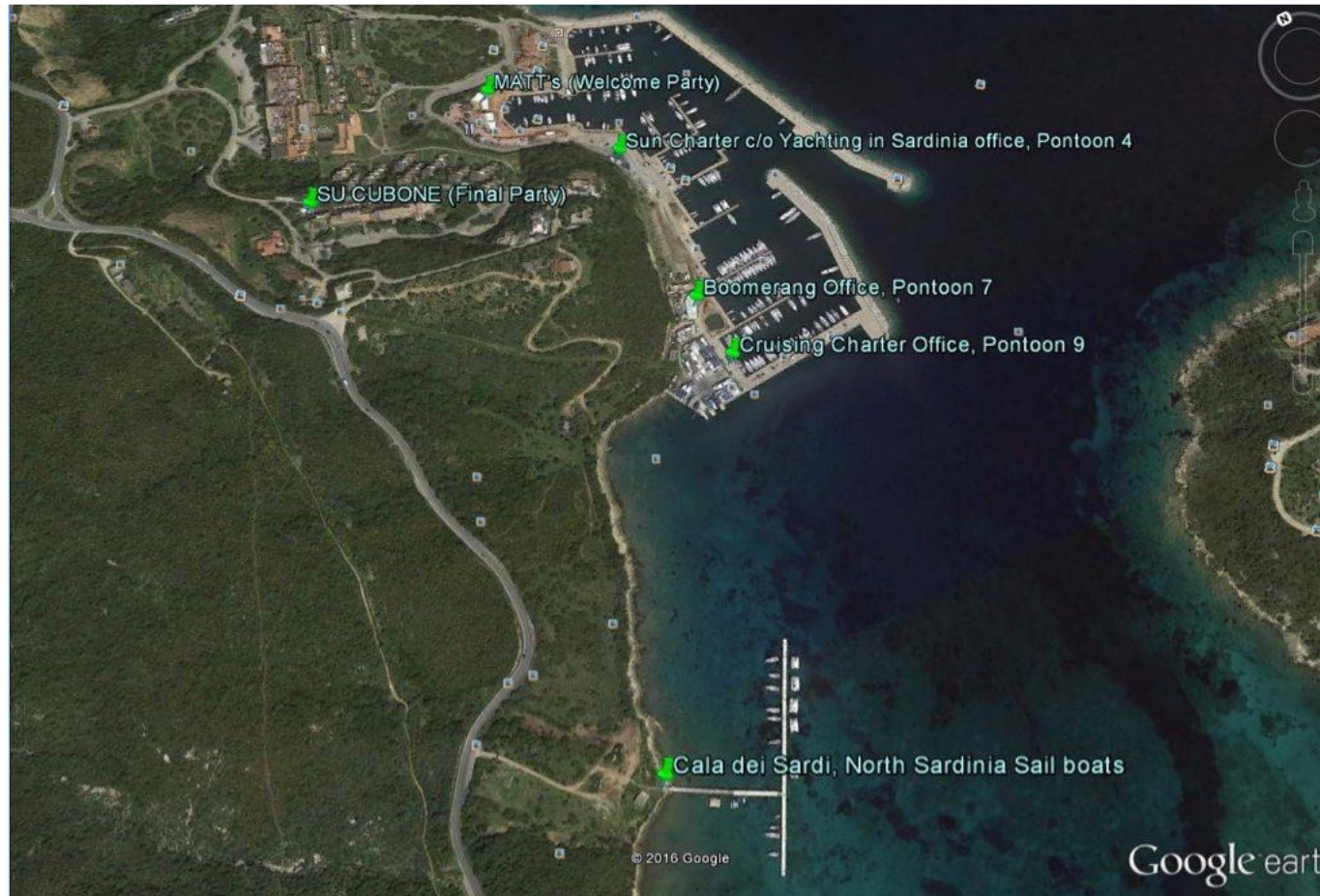
## Prize-giving Party

The Prize-giving party will be held in Su Cabone on the hillside above Portisco - quite a long walk!

Start time is 19:30.

Details to follow by email by 1st September.

## SU CUBONE



## Dining and Restaurant Reservations

We will not book restaurants in advance this year because when we're in marinas there is a good choice available and when we are in harbours at anchor there is generally nothing to book.

## Refuelling and Emptying of Holding Tanks

We must refuel before returning the yachts on Friday and holding tanks should be emptied when well offshore on the last day. Portisco marina has a fuel berth, Cala dei Sardi does not.

## Itinerary and Courses

All courses shown in the following pages are subject to possibly significant change depending on the weather and health of crews. All will be explained at the gam skipper briefing each day or by VHF after leaving harbour. The straights of Bonifacio are renowned for high winds and we may have to completely revise the itinerary if they occur at the wrong time. We will not normally start a race in winds over about 20 knots.

## VHF Channels

16 Coastguard

77 Fleet communications (we may switch to 6 or 8 if 77 is busy)

68 Italian Weather (continuous, but poor!)

79 French Weather (07:03, 12:33, 19:03 after call on CH16)

69 Marina - Portisco

09 Marina - Port de Plaisance, Bonifacio

12 Marina - Porto Santa Teresa di Galura



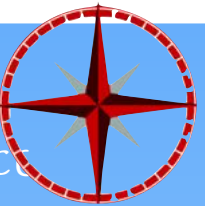
## SOME INTERNET LINKS OF INTEREST:-

- ★ [HTTP://WWW.MARINADIORTISCO.IT](http://www.marinadiportisco.it)
- ★ [HTTP://WWW.CALADEISARDI.IT/](http://www.calaaisardi.it/)
- ★ [HTTP://WWW.PORT-BONIFACIO.FR](http://www.port-bonifacio.fr)
- ★ [HTTP://WWW.BONIFACIOCORSICA.NET](http://www.bonifaciocorsica.net)
- ★ [HTTP://WWW.ITALYHEAVEN.CO.UK/SARDINIA/MADDALENA.HTML](http://www.italyheaven.co.uk/sardinia/maddalena.html)
- ★ [HTTP://WWW.ITALYHEAVEN.CO.UK/SARDINIA/SANTA-TERESA-GALLURA.HTML](http://www.italyheaven.co.uk/sardinia/santa-teresa-gallura.html)
- ★ [HTTP://WWW.SARDEGNATURISMO.IT/EN/POINT-OF-INTEREST/ISOLA-DI-BUEDELLI-LA-MADDALENA](http://www.sardegaturismo.it/en/point-of-interest/isola-di-buedelli-la-maddalena)
- ★ [HTTP://WEATHER.MAILASAIL.COM/FRANKS-WEATHER/MARINE-WEATHER-FORECASTS-MEDITERRANEAN-ADRIATIC](http://weather.mailasail.com/franks-weather/marine-weather-forecasts-mediterranean-adriatic)



## DESTINATION WAYPOINTS

N41 1.953	E09 31.547	PORTISCO ENTRANCE
N41 8.236	E09 32.298	PORTO CERVO ENTRANCE
N41 14.998	E09 25.796	CALA SPALMATORE
N41 15.456	E09 25.664	PORTO MASSIMO ENTRANCE
N41 17.435	E09 21.522	BUEDELLI ANCHORAGE
N41 23.293	E09 8.837	BONIFACIO ENTRANCE
N41 23.328	E09 9.807	BONIFACIO PONTOONS
N41 14.245	E09 11.706	ST TERESA DI GALURA PONTOONS
N41 11.752	E09 17.562	PORTO LISCIA ANCHORAGE
N41 12.811	E09 24.642	CALA MANGIAVOLPE MARINA
N41 11.302	E09 27.005	PORTO PALMA ANCHORAGE
N41 7.458	E09 27.158	GOLFO DI ARZACHENA ANCH.



General

I will be your Race Officer and my boat, "Zedaron" will be the "rabbit" for race starts (see below). Please make sure someone on your boat is familiar with ISAF's "Racing Rules of Sailing for 2013 - 2016", in particular Parts 1 and 2. If possible, we will race one leg each day with the worst result discarded if we sail at least four. In the overall rankings, ties will be decided by considering each yacht's best performances in order until the tie is broken.

Courses and Pre-race Briefings

Briefings will be held every morning at 09:00 unless stated otherwise - see the crew of Zedaron for venue. All skippers and crews are welcome. The day's course(s) will be given at the briefing, or later by VHF on the water. The provisional routes and stopover locations are given on the following pages. In every case, the first mark to be rounded after the start will be upwind and will require at least one tack. One of the waypoints shown on each route chart in the following pages is likely to be used as the windward mark, after which the route will follow the waypoints in numerical order. If the race is to be shortened it will be at a distinctive location near one of the waypoints - listen out for announcements on VHF if some of the fleet appear to need luck to finish before the time limit. Letter "P" or "S" after a course mark number indicates a port or starboard rounding (i.e. the direction to be turned when going around the mark).

Start Procedure

The procedure is explained diagrammatically on the next page. My boat will act as the "Rabbit" which starts the race by approaching just to starboard of the windward mark on Port tack. The other entrants cross behind Zedaron on Starboard tack. The start of the race will be announced by VHF on channel 77 (or 6 or 8) and if you don't cross on the initial run, you may cross behind the rabbit at any time before we round the windward mark, failing that, you must round near the windward mark after the rabbit. If you have any questions this procedure can be explained in more detail in a briefing before the first start. For the purpose of elapsed time calculation the race will be considered to have started when the first boat crosses the rabbit's wake. We will fly our distinctive "Spellbound" flag before the start.

Finishing Procedure

The finishing line will be defined as a bearing to a conspicuous mark and you must record your own finishing time using the time display on your GPS. Unless stated otherwise, the time limit for each leg will be 18:00.

Penalties and Protests

A single 360° turn is the penalty for breaking a rule ("reduced" to 180° if protested!!). We're not expecting any protests as we're here to enjoy ourselves!

Anchors / Spinnakers

Anchors can be left in place on the bow when racing, but don't use them to make holes in other yachts, especially the "rabbit" at the start! Spinnakers, cruising chutes, jib poles and other equipment, such as boat-hooks are not to be used while racing.

Radio Check / VHF Procedure

We will have a radio check on the first day before we leave harbour and on request, but please not during the start procedure.

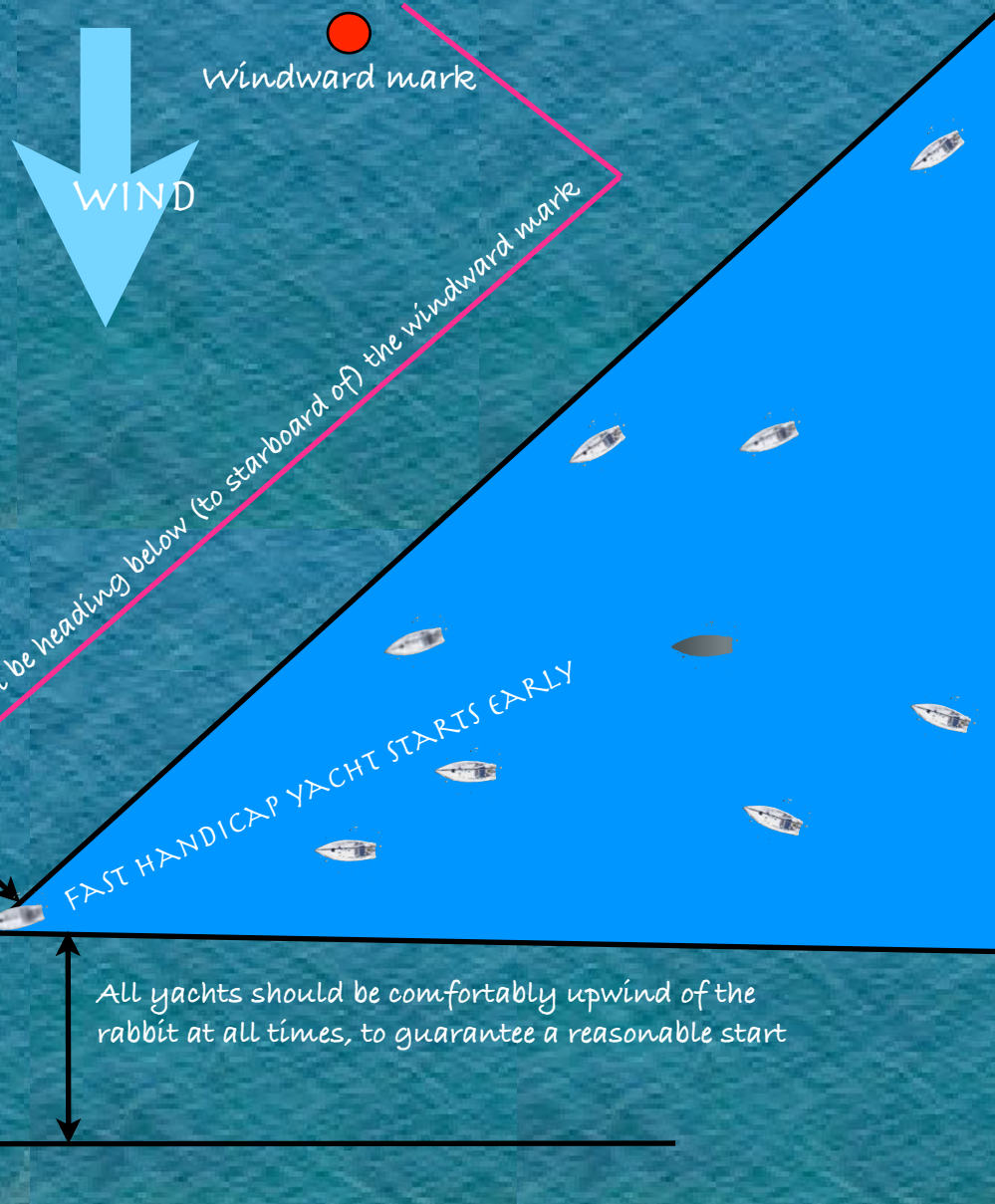
Waypoints

We don't need to use any waypoints for the races, but locations for overnight stops are given in this log book on the previous page. Please make sure your GPS datum is set to WGS84 or you may find yourself sailing on land at times.



All yachts should position themselves in the blue triangle for when rabbit starts her run on port tack.

The perfect start involves "dipping" behind the rabbit yacht when you are close hauled on starboard tack. Ideally, dip onto a beam reach and harden up at the last minute to cross inches from the rabbit's stern close hauled. The yacht will then be faster than the rabbit and can overtake her using her momentum. Passing the rabbit heading in the opposite direction to the rabbit will give you a poor start and unnecessarily exhaust your crew.



IMPORTANT NOTICE

Tedious, I know, but I have to remind you that a boat is entirely responsible for its own safety and nothing in this document or anywhere else, reduces this responsibility.

It is for the boat to decide whether it is fit to sail in the conditions in which it will find itself. By going to sea, the boat confirms that it is fit for these conditions and that its crew is competent to sail in them.

We recommend each skipper gives his crew a safety briefing covering as a minimum gas safety, MOB procedures, boom awareness, winch operation and lifejacket.

Each skipper should make himself aware of any relevant medical conditions any of his crew have, especially diabetes, epilepsy or heart condition. It will not be easy to get prescription medicines during the week so make sure your crew has what is needed before leaving Athens.

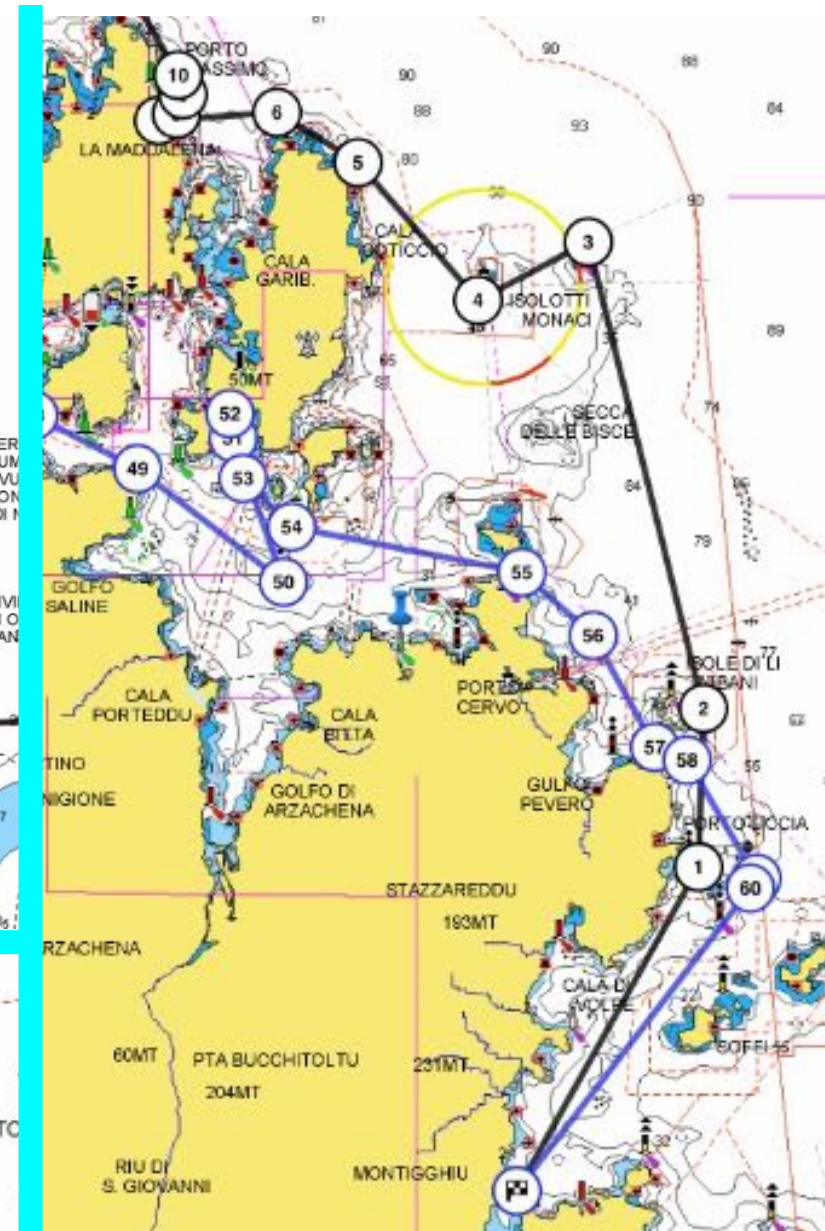
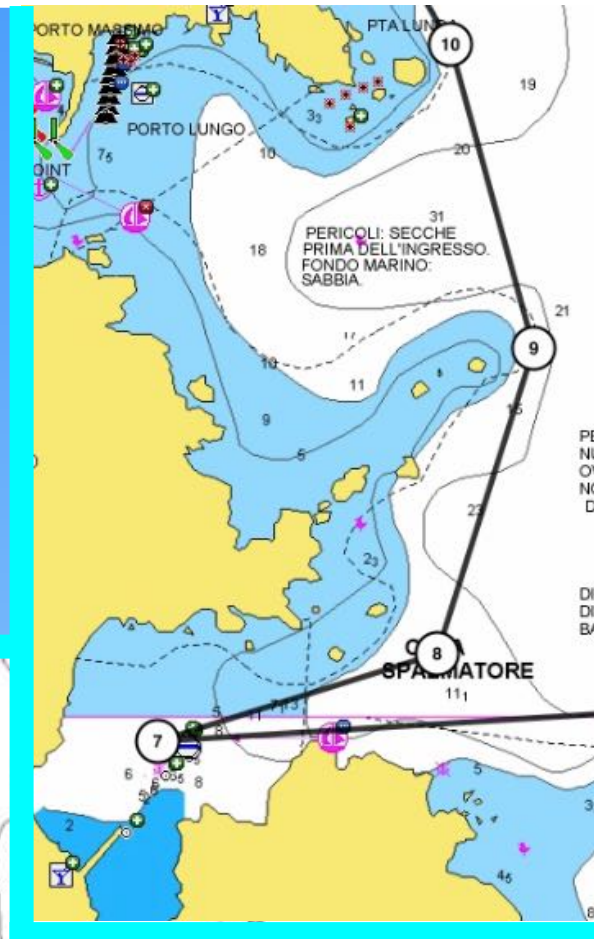
Specifically, please do not consider the courses shown to be safe sailing routes - they are only there to show what has to be rounded and navigation is required between the course marks.



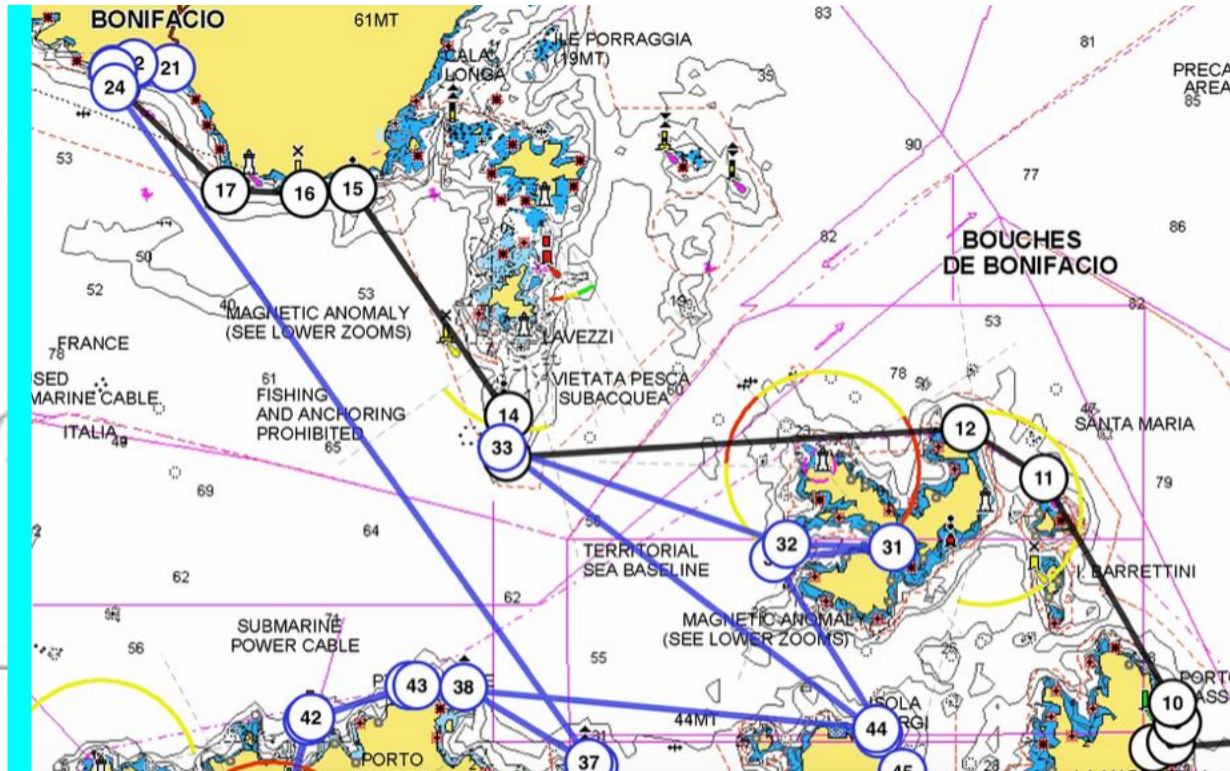
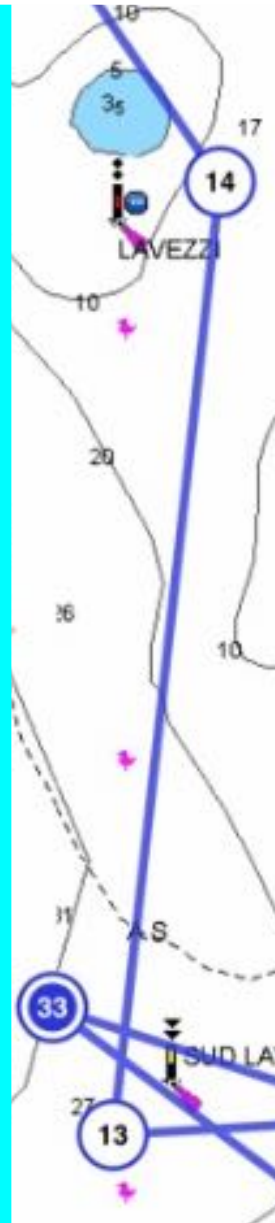
Route 1 - 18th September - 15.4 NM  
Waypoints 0 to 7.

Start will be in the region of WP1, 59, 60 or Isole Mortoriotto, using the marks or hazards as the upwind mark. WP2 is Isole di Li Nibani (P), WP3 is Secca dei Monaco (P), WP4 Isolotti Monaci (S), WP5 (P) and WP6 (P) and finish will be when the rock WSW of WP9 bears 180. Early finish could be at WP3 (mark bears 180) or WP4 (light bears 0). Lengthened course would involve inclusion of WP50 (S) between WP3 and WP4, with the latter left to port.

Anchor in Cala Spalmatore near WP7.



# PAGE 10 CALA SPALMATORE TO BONIFACIO



Route 2 - 19th September 14.8NM  
Waypoints 7 to WP21.

Start will use WP11 IDM or the group of islands to the south as the upwind mark. Leave the islands of Rizzoli and Santa Maria to port, WP13 Sud Lavezzi SCM (S), WP14 IDM (P), WP15 IDM (P) and finish at WP18 when headland bears 90.

We will moor as far up the creek as we can, ideally on the S side in Port de Plaisance. Listen on VHF for details.



SARDINIA

SEPTEMBER 17TH TO 23RD

## Route 3a - 20th September - 11.1 NM

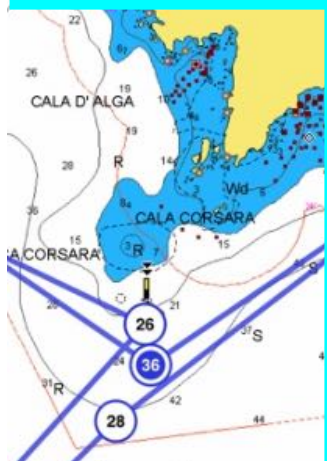
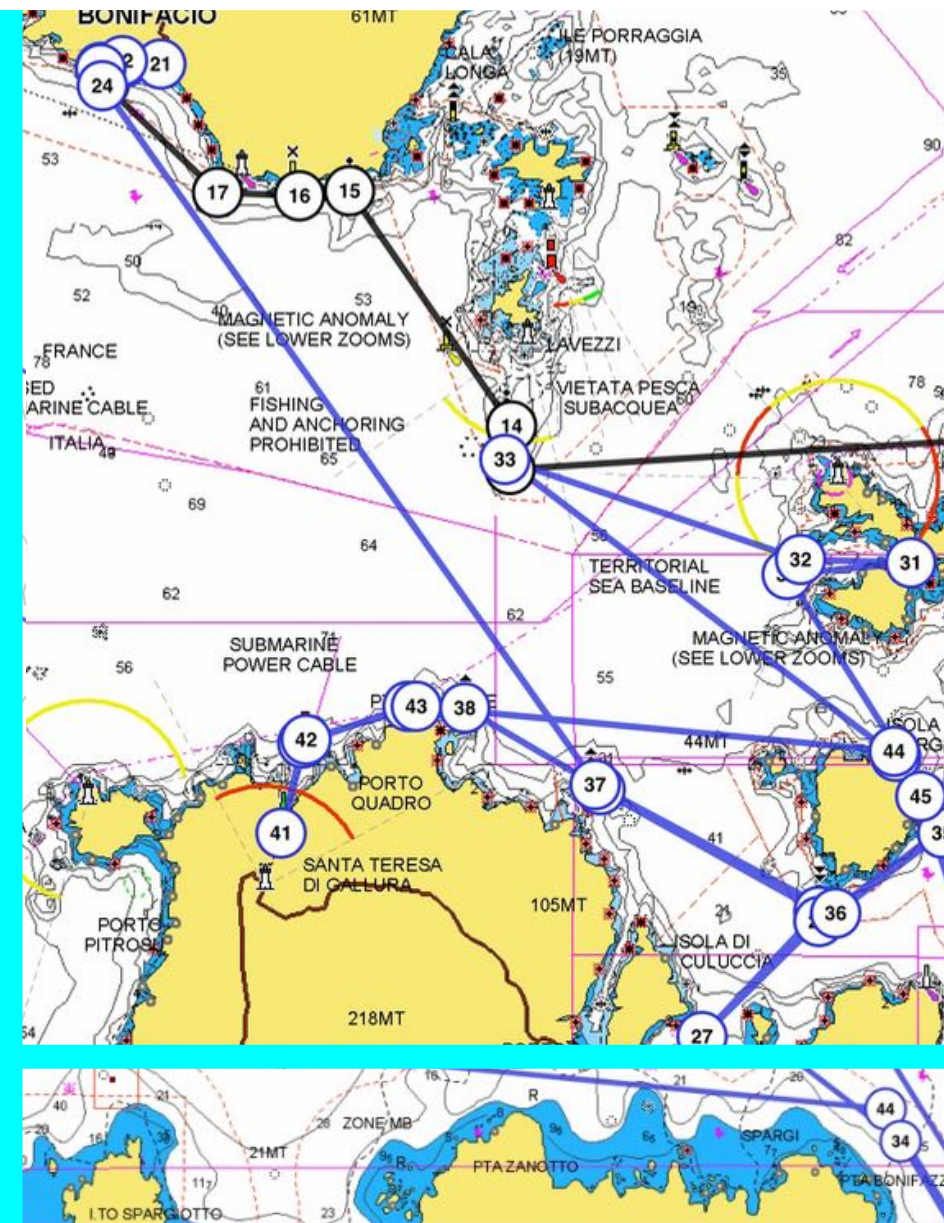
The start will use WP15 (IDM) as the upwind mark (see previous page), WP25 Group of Cardinal marks, Scoglio Paganetto (P), finish when WP26 SCM bears 0. If time and conditions suit, we can take a break at WP27 or even stay the night there - it is a free anchorage and beautiful.

## Route 3b - 20th September - 4.5 NM

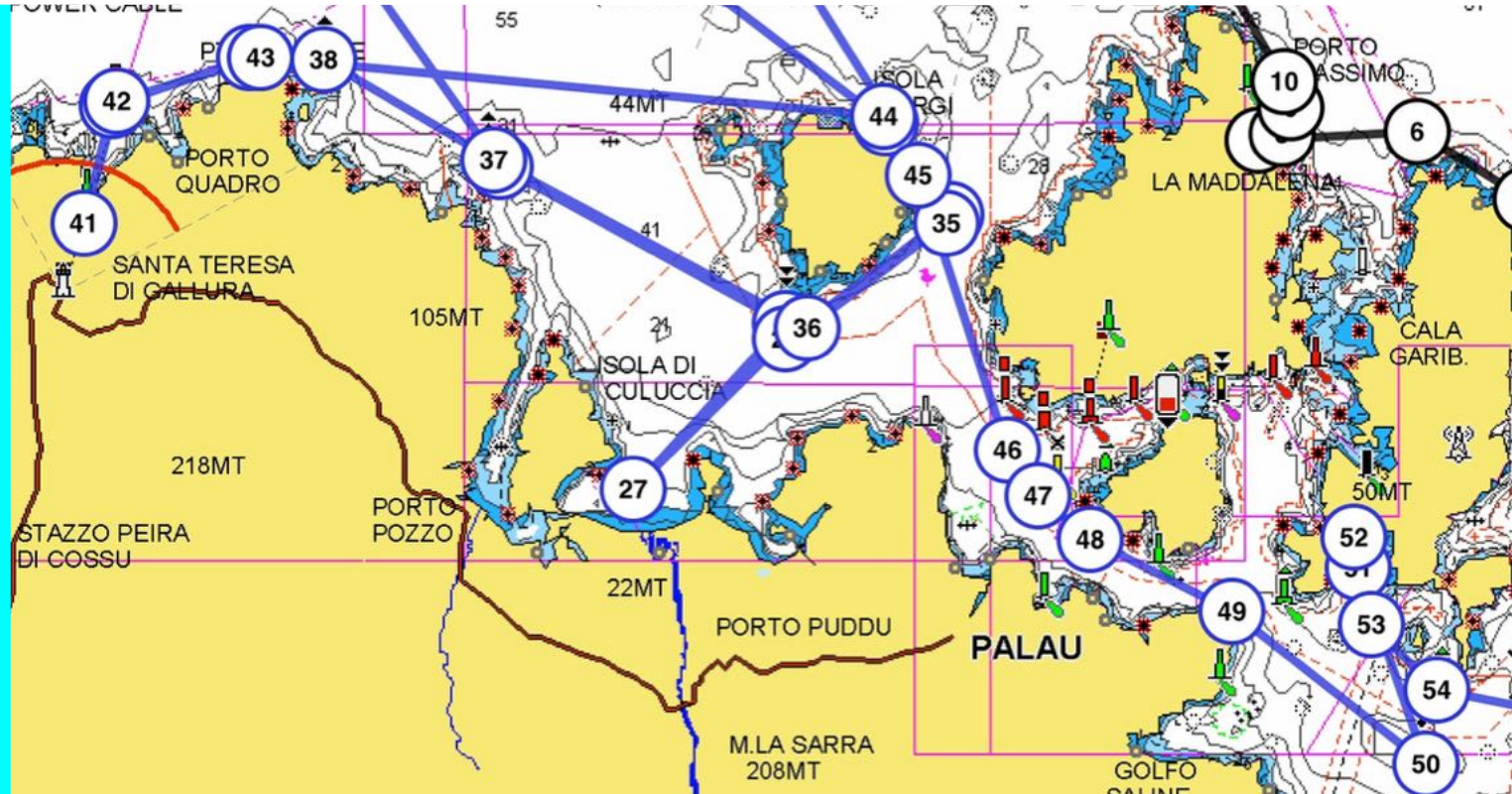
If time and conditions suit, we can have a short second race from WP28 to WP31.

Start will use WP28 (SCM) as windward mark, leave Isola Spargi to port, head west after WP34 until E edge of Isola Spargiotto bears 180. Don't go too close in!

If we do this second race, the overnight will be an anchorage at WP31 in the middle of the three islands, Budelli, Razzoli and Santa Maria, entering from the west via WP30.







Route 5 - 22nd September 15.3 NM

WP42 PHM will be the upwind mark. WP43 offlying rocks (S), WP44 and WP45 leave Spargi to starboard, 46 IDM (P), 47 SCM (P), WP48 (P), WP49 (S) and finish at WP50 when the IDM bears 0. See previous page for detailed charts.

Anchor in Porto Palma, forming a raft with the larger yachts in the centre. Please listen on VHF for instructions. Expect a degree of chaos!

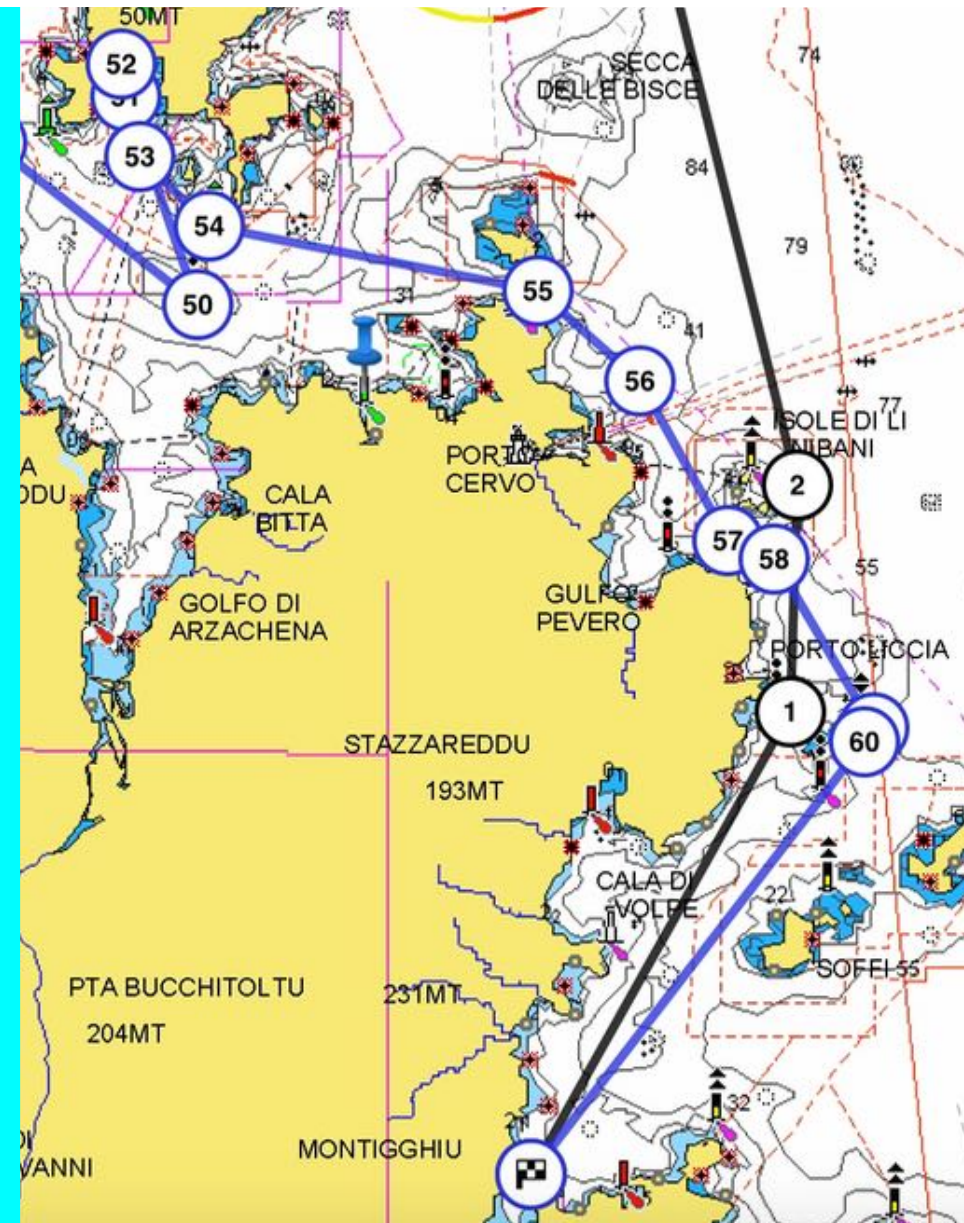
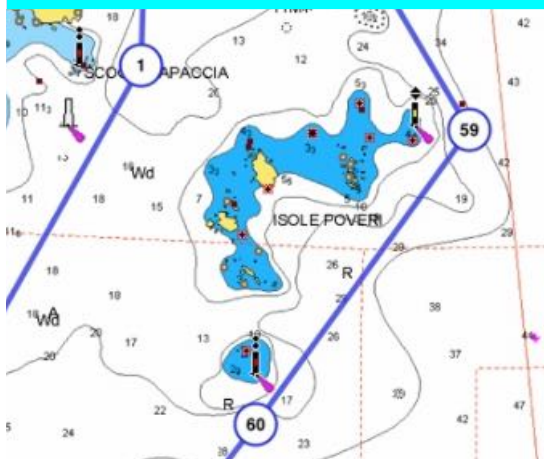
Once the raft is safely secured, we will have our Roux gourmet night of fine dining and acoustic music, vocal, instrumental or a combination and some dancing.
















Best dish wins the gourmet prize according to everyone's vote at the Friday morning skipper's briefing.

## Route 6 - 23rd September - 13.0 NM

The start will be at WP50, then WP55 headland (S), WP56 Secce del Cervo ECM (S), WP57 to get through the passo delle Galere, WP58 to clear Isola delle Rocche, WP59 ECM (S), WP60 IDM (S) and finish when the red light on the Portisco marina breakwater bears 0.

After this race each yacht has to be refuelled and moored at its charter base, either in Portisco or Cala dei Sardi.



Skipper	Boat Number	Name	Make/Model	TCF *	Day 1	Day 2	Day 3	Day 4	Day 5	Day 6	Dis-card	Rank
John Hall Hall		Zedaron	Bavaria 51c	1.020								
Colin Ford		Sonia	Dufour 460	0.990								
Carolyn Krijnse Locker		Barbara	Dufour 460	0.990								
Martin Suter		Caterina	Sun Odyssey 509	1.030								
Keith Hale		Aludra	Bavaria 46c	1.000								
Philip Young		Rutilicus	Bavaria 51c	1.020								
Steve Visser		Olesya	Lagoon 440	0.990								
David Barlow		Oyster Blue	Oyster 56	1.040								
David Brewster		Hydra	Bavaria 45c	0.970								
Denis O'Brien	 	Nial	Bavaria 46c	1.000								
Jakalyn James	 	Rhea	Bavaria 43c	0.910								
Vilmos Thomazy	 	Merope	Bavaria 46c	1.000								





