

17th to 24th September 2011

# HIGHPOINT

## Itinerary

Portisco  
Cala Portese  
Bonifacio  
Budelli  
La Maddalena  
Tavolara  
Portisco



## WELCOME TO HIGHPOINT 2011

It was so great here last year that everyone wanted to come back for 2011 so here we are.....

Welcome to High Point YachtFest 2011. In 2010 we visited Sardinia and Corsica and had such great sailing we have come back for more in 2011. In 2011 we have 9 yachts which should make for some great competition without the stress of the larger fleets of some regattas. We will race every day, but will also make time for swimming and exploring some of the stunning bays.

The area is renowned for potentially strong winds, so the planned itinerary may not be what we end up doing, but it is what we are aiming for.

The fleet will assemble in Portisco during Saturday and we will all get together for the first time at the Welcome party which Carolyn has organised in Matt's Mare at 7:30 pm. Here will be our first opportunity to catch up with each other from last and previous years and to welcome some newcomers.

On Sunday morning, after a crew/skipper briefing we will head north, having our first race which will finish near Cala Portese on the island of Caprera, where we will anchor for the night. We pass some conservation areas which

have restrictions limiting where we can go. These will be clarified in the first briefing.

Monday's course will take us through the beautiful islands south of La Maddalena and on to Bonifacio with the spectacular cliffs and entrance to marvel at on the way in. We will moor together in the marina and dine in the old part of the town high up on top of the cliffs.

Tuesday has been allocated as a shorter course day with options for swimming before a race leg that will take us near to our anchorage on the east side of Budelli.

From Budelli we will weave a passage through the islands to our marina in La Maddalena on Wednesday evening.

Thursday's route will take us back past Portisco to the bay in the south western part of the island Tavolara. This beautiful anchorage will be our final stop before racing back to Portisco on Friday in time for the farewell party and prize-giving. Carolyn will hand over her Commodoreship to the new winner and we can start the discussion about where to choose for the following year.

## INDEX

- 1 Introduction
- 2 Welcome Party
- 3-10 The crews
- 11 Sailing Instructions
- 12 Waypoints
- 13-17 Itinerary
- 18 Results Table

## VHF CHANNELS

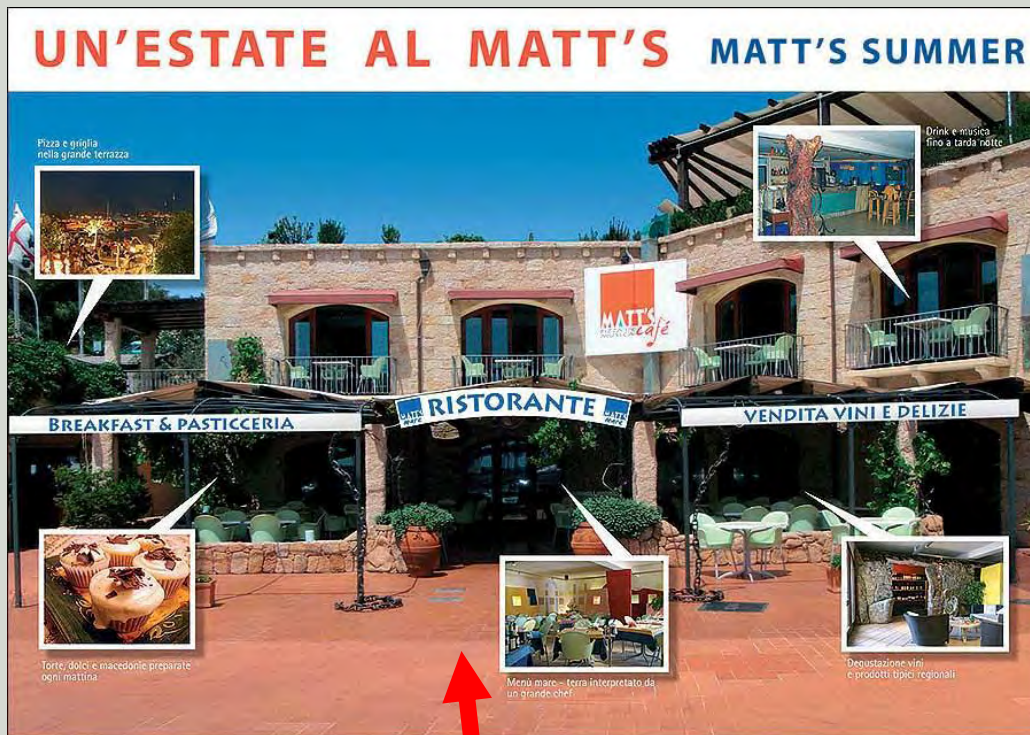
- 71 HPYF Inter-ship (or 72)
- 16 Weather & safety
- 68 Weather continuous broadcast
- 69 Portisco Marina office
- 9 Marine authorities in all ports
- 16 Authorities in Porto Cervo, St Teresa di Gallura and Palau

## THE FLEET

|                   |          |
|-------------------|----------|
| John "Nial"       | Bav 46c  |
| Carolyn "Patty"   | S045     |
| Duncan "Josefina" | Cyc 50.5 |
| Colin "Julietta"  | Oce 411  |
| Martin "Alya"     | Bav 46c  |
| John "Yed"        | Bav 50   |
| Vilmos "Valeria"  | Cyc 50.5 |
| Philip "Draco"    | Bav 50   |
| David "Rhea"      | Bav 43   |

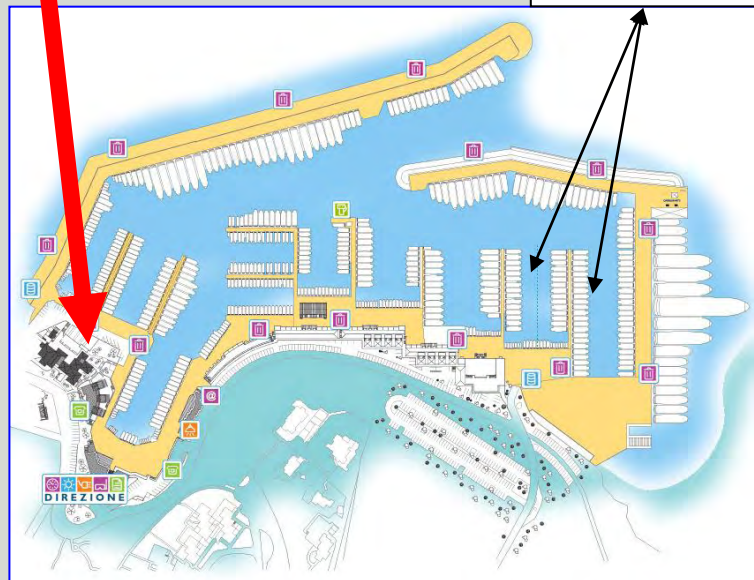
## Welcome party!

Saturday September 17th we will organize the Welcome Party at Matt's Mare, which is situated in the Marina di Portisco.



HPYF charterboats

The party will start at 7:30 pm. A nice buffet will be served for EUR 20,00 per person. Payment to be collected by the skippers from their crew. If somebody of your crew is a vegetarian, vegan etc or is allergic to some kind of food, please mail this information to [Carolyn@adriaticolidays.co.uk](mailto:Carolyn@adriaticolidays.co.uk), so I can inform the diner.



For those who arrive late:

There will be enough food left. Try to get as soon as you arrive at the marina, please don't stay on board. Everybody is anxious to meet everybody.

See you at Matt's!

Carolyn

# JOHN HALL HALL + CREW



John  
and  
Mandy



Sasha



Martine



Ion



Denis



Mary

Dutch  
Commodores-team



Team Patty



Erzsebet  
Thomazy



Attila  
Thomazy



Vilmos  
Thomazy



Lee  
Bernhoft

Team Valeria



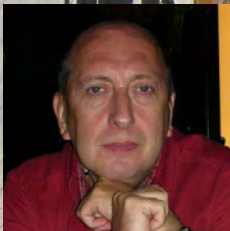
Dick Moore – Sea Dog



Dave Alden – Top Dog



Bruce Gibson – Mad dog



Barry Wise – first mate



Dave Wrigley – co skipper



Colin Ford - Skipper

C

O

R

K

S

C

R

E

W

H

P

Y

F

2

0

1

1

Team Julieta

# Team Rhea



Sally



Jak



Danny



Dave



Janet



Andrew & Rebecca



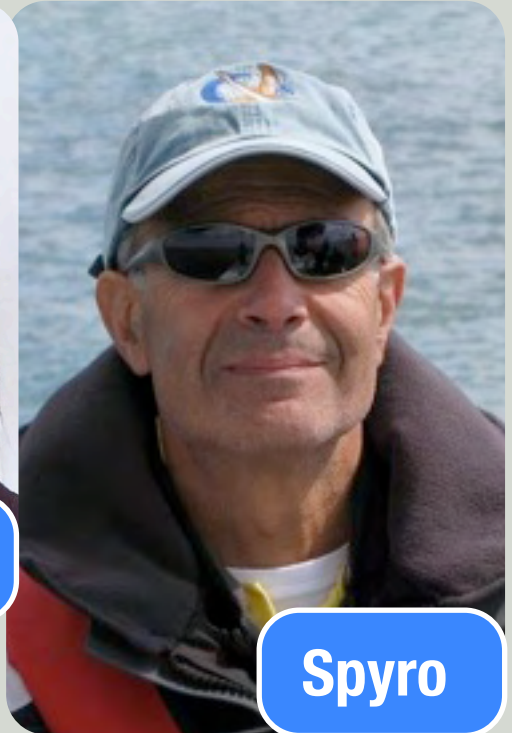
**Richard**



**Philip**



**Sophie**



**Spyro**



**Duncan**



**Giles**

*Team Josefina*



**Adam**

**Martin and Diane**



**Taras and Nadia**

**Matthew**



**Team Alya - "The Aliens"**





Captain John



Ernesto

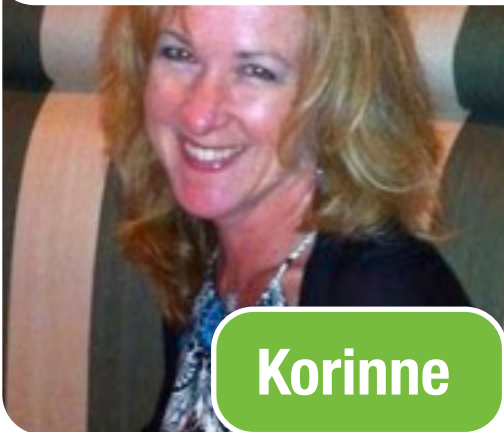


Melody



Laurie

TEAM YED - "THE YEDDIES"



Korinne



Lori

# DRACO



## The Draconians



**Philip  
(Skipper)**



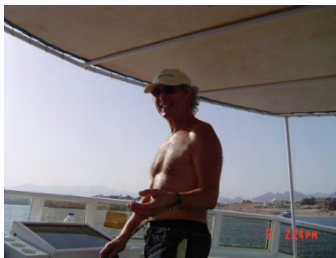
**Evert  
(Co-Skipper)**



**Lourdes**



**Yvonne**



**Paul**



**Peter**



**Brian**



**Doug**

## SAILING INSTRUCTIONS

### General

HPYF 2011 will take place out of Portisco in Sardinia from 17th to 24th September 2011. The route, weather permitting, will be Portisco, Cala Portese, Bonifacio, Budelli, La Maddalena, Tavolara and then back to Portisco.

John Hall Hall will be your Race Officer and his boat, "Nial" will be the "rabbit" for race starts (see below). The event will be sailed under ISAF's "Racing Rules of Sailing for 2009 - 2012".

The event will consist of 6 or more races (legs) with the worst result discarded. The overall ranking will be in order of lowest points score. Ties will be decided based on each yacht's best performances. The overall winners will receive a prize.

### Courses and Pre-race Briefings

Briefings will be held every morning on one of the boats (best coffee) or in a nearby cafe. All skippers and crews are welcome and it is an opportunity for feedback to make the event how you want it.

Where possible the day's course(s) will be given at the briefing, but if the weather is variable, it may be done by VHF on the water. If practical, the start, finish and course marks will be

selected from the list of waypoints given on the next page.

### Start Procedure

The normal starting procedure for this small fleet will be a "gate" start. John's boat will act as the "Rabbit" which approaches the windward mark on Port tack and the other entrants cross behind him on Starboard tack. The "rabbit" may trail a fender to reduce risk of collision – you must start behind the fender without touching it. The start of the rabbit's run will be pre-announced by VHF and you must start before the rabbit tacks to avoid overstanding the windward mark. This procedure will be explained in more detail in a briefing before the first start.pastries.

### Finishing Procedure

The finishing line will be defined as a bearing to a conspicuous mark and you must record your own finishing time using the time display on your GPS. The time limit for each leg will be 18:00 unless an earlier time is specified by the Race Officer.

### Penalties and Protests

A 360° turn is the penalty for breaking a rule, or two 360° turns for a right-of-way rule (ISAF Part 2). We're not expecting any protests beyond a request for a round of

drinks by the victim's crew. We're here to enjoy ourselves! In marginal cases (e.g. protested penalties) the penalty will be "reduced" to a 180° turn!!!!

### Berthing

We will berth up together each evening, whether in an anchorage, port or marina.

### Anchors / Spinnakers

Anchors can be left in place on the bow when racing, but don't use it to make holes in other yachts, especially the "rabbit" at the start!

Spinnakers, cruising chutes, jib poles and other equipment, such as boat-hooks are not allowed to be used to assist with boat speed or in a threatening manner.

### Radio Check / VHF Procedure

We will have a radio check on the first day before we leave harbour.

### Waypoint Listing

Please set your GPS to WGS 84 datum before loading these waypoints.

The numbering is made up of the first two letters (HP = HighPoint) followed by a number representing the day, The last 3 digits refer to the route point number shown on the applicable chart.

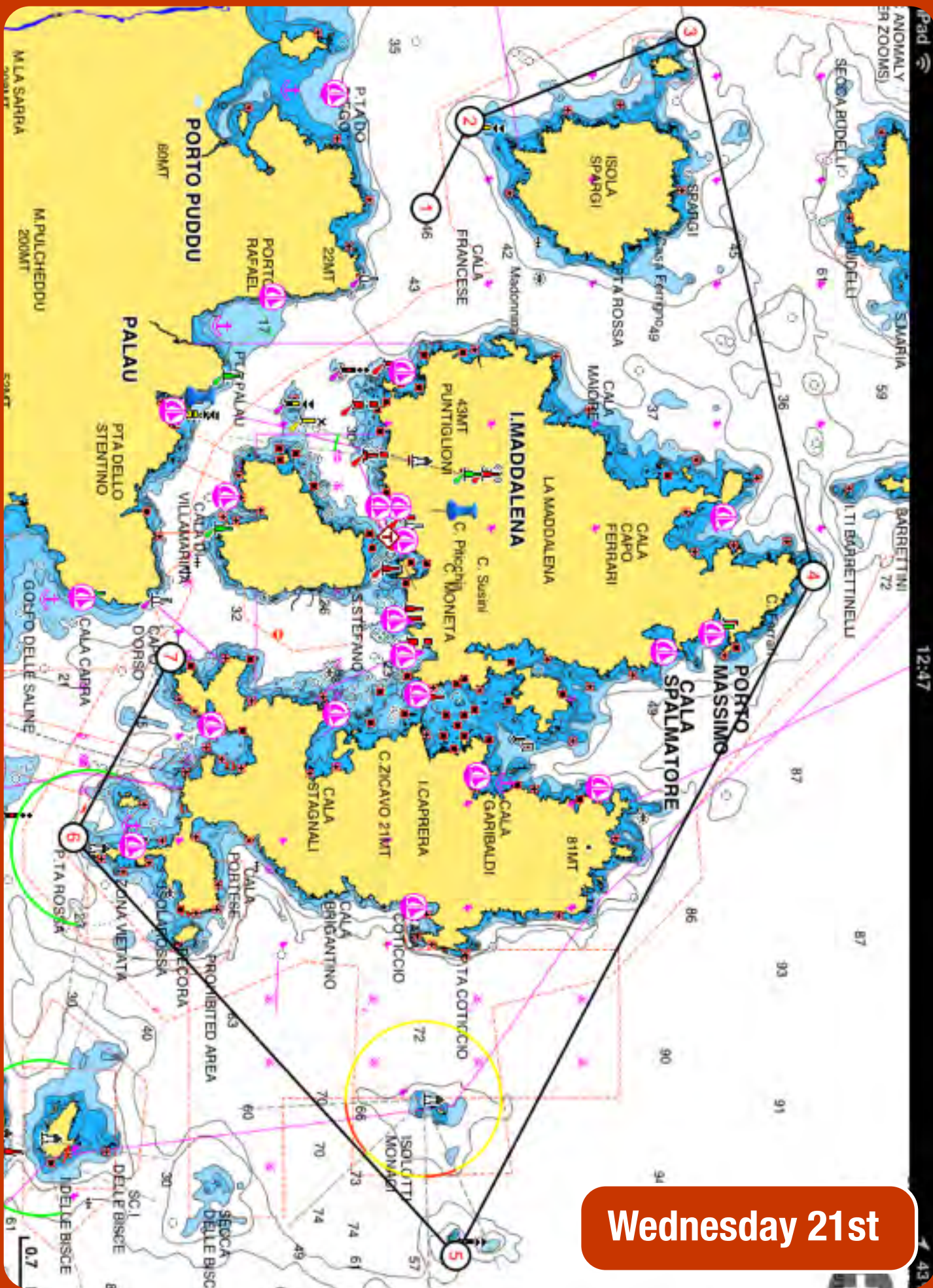


| WAYPOINT     | POSITION (WGS 84)    | WAYPOINT | POSITION (WGS 84)    |
|--------------|----------------------|----------|----------------------|
| Bonifacio    | N41 23.325 E9 09.731 | HP3003   | N41 22.399 E9 17.810 |
| Cala Portese | N41 11.205 E9 28.054 | HP3004   | N41 22.375 E9 18.406 |
| E Budelli    | N41 16.931 E9 21.613 | HP3005   | N41 22.017 E9 19.018 |
| Mangiavolpe  | N41 12.762 E9 24.585 | HP3006   | N41 18.117 E9 24.118 |
| Mid Budelli  | N41 17.433 E9 21.492 | HP3007   | N41 17.668 E9 24.494 |
| Portisco     | N41 01.925 E9 31.551 | HP3008   | N41 16.450 E9 24.232 |
| SW Tavolara  | N40 53.481 E9 40.927 | HP3009   | N41 16.481 E9 20.959 |
| HP1003       | N41 05.827 E9 35.434 | HP4001   | N41 12.977 E9 20.995 |
| HP1004       | N41 07.199 E9 34.305 | HP4002   | N41 13.368 E9 20.070 |
| HP1005       | N41 07.339 E9 33.772 | HP4003   | N41 15.195 E9 18.957 |
| HP1006       | N41 08.708 E9 32.780 | HP4004   | N41 16.323 E9 25.066 |
| HP1007       | N41 09.425 E9 31.589 | HP4005   | N41 13.237 E9 32.783 |
| HP1008       | N41 09.454 E9 31.431 | HP4006   | N41 10.014 E9 28.072 |
| HP1009       | N41 09.747 E9 30.975 | HP4007   | N41 10.824 E9 26.087 |
| HP1010       | N41 09.995 E9 30.927 | HP5001   | N41 09.040 E9 29.030 |
| HP1011       | N41 12.951 E9 31.309 | HP5002   | N41 09.322 E9 27.734 |
| HP2001       | N41 09.197 E9 29.220 | HP5003   | N41 09.456 E9 27.726 |
| HP2002       | N41 09.298 E9 27.776 | HP5004   | N41 09.429 E9 31.596 |
| HP2003       | N41 10.757 E9 25.352 | HP5005   | N41 08.695 E9 32.830 |
| HP2004       | N41 11.362 E9 23.756 | HP5006   | N41 07.224 E9 33.095 |
| HP2005       | N41 11.725 E9 23.154 | HP5007   | N41 07.255 E9 33.702 |
| HP2006       | N41 12.222 E9 22.759 | HP5008   | N41 07.164 E9 34.278 |
| HP2007       | N41 13.082 E9 22.417 | HP5009   | N41 05.207 E9 37.208 |
| HP2008       | N41 13.622 E9 22.366 | HP5010   | N40 59.763 E9 39.951 |
| HP2009       | N41 17.930 E9 23.146 | HP5011   | N40 53.606 E9 39.948 |
| HP2010       | N41 18.688 E9 22.888 | HP6001   | N40 54.621 E9 40.029 |
| HP2011       | N41 18.827 E9 22.267 | HP6002   | N40 55.333 E9 39.178 |
| HP2012       | N41 18.546 E9 15.324 | HP6003   | N40 55.571 E9 38.039 |
| HP2013       | N41 19.963 E9 14.307 | HP6004   | N40 59.763 E9 39.951 |
| HP2014       | N41 21.861 E9 10.697 | HP6005   | N41 00.267 E9 39.474 |
| HP3001       | N41 17.821 E9 17.324 | HP6006   | N41 02.385 E9 33.643 |
| HP3002       | N41 18.575 E9 15.343 |          |                      |

Sunday 18th

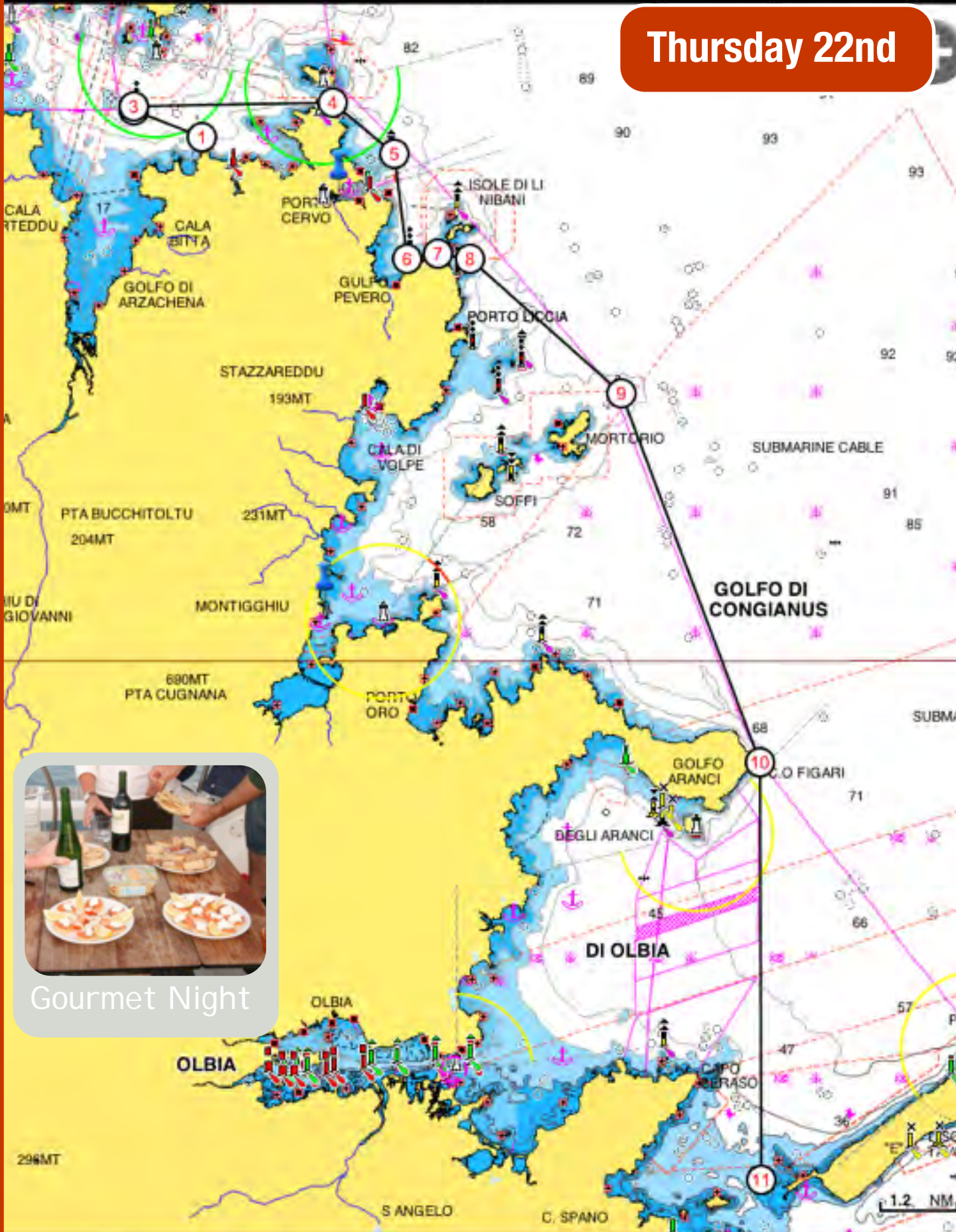






Wednesday 21st

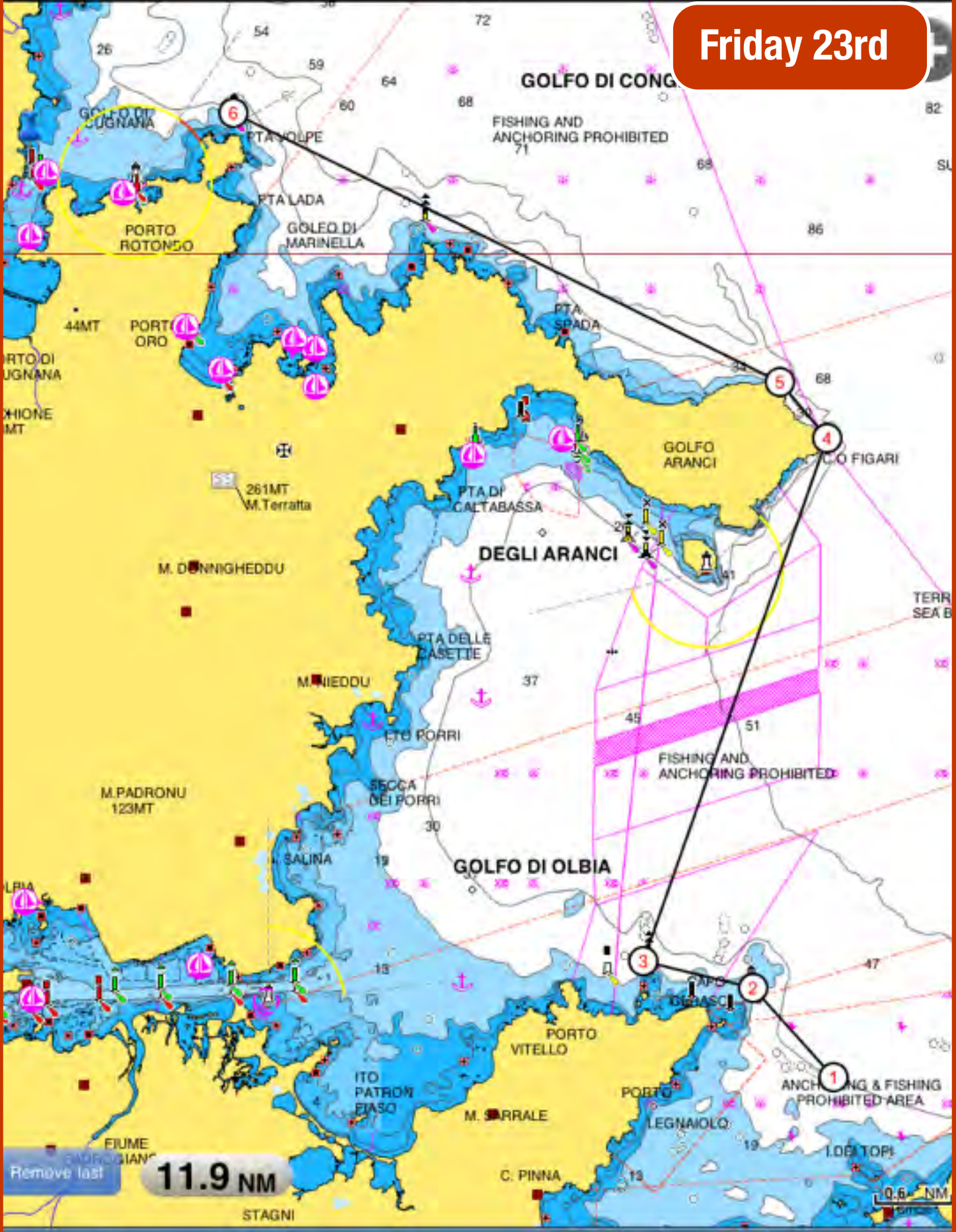
Thursday 22nd



Gourmet Night



Friday 23rd



GPS

Search

Track

Distance

WP

Menu

| RESULTS TABLE          | 1 | 2 | 3 | 4 | 5 | 6 | 7 | 8 | 9 | 10 | TOTAL | DISC | NETT | RANK |
|------------------------|---|---|---|---|---|---|---|---|---|----|-------|------|------|------|
| Carolyn Krijnse Locker |   |   |   |   |   |   |   |   |   |    |       |      |      |      |
| Duncan MacPhee         |   |   |   |   |   |   |   |   |   |    |       |      |      |      |
| Colin Ford             |   |   |   |   |   |   |   |   |   |    |       |      |      |      |
| John Hall Hall         |   |   |   |   |   |   |   |   |   |    |       |      |      |      |
| Martin Suter           |   |   |   |   |   |   |   |   |   |    |       |      |      |      |
| John Coggin            |   |   |   |   |   |   |   |   |   |    |       |      |      |      |
| Vilmos Thomazy         |   |   |   |   |   |   |   |   |   |    |       |      |      |      |
| Philip Young           |   |   |   |   |   |   |   |   |   |    |       |      |      |      |
| David Brewster         |   |   |   |   |   |   |   |   |   |    |       |      |      |      |

